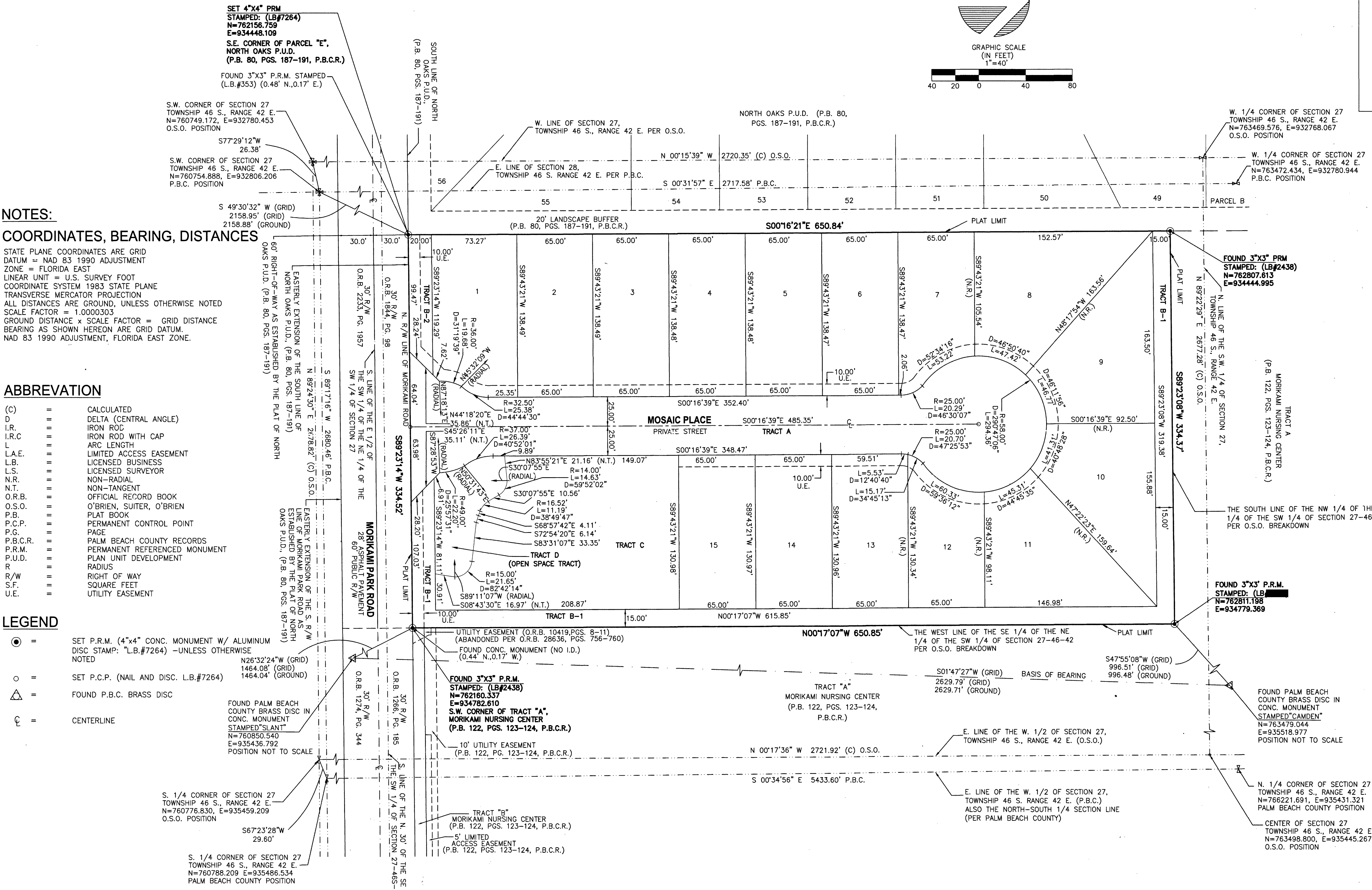
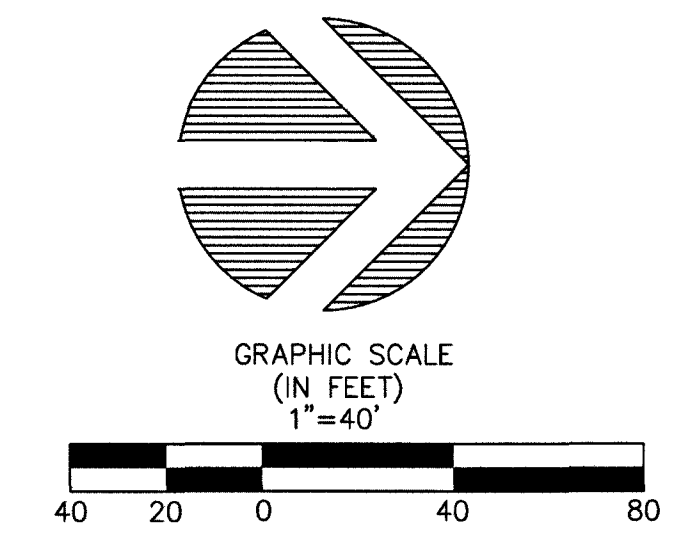


PERIMETER
SURVEYING & MAPPING
 Certificate of Authorization No. LB7264
 Prepared by: Jeff S. Hodapp, P.S.M.
 947 Clint Moore Road
 Boca Raton, Florida 33487
 Tel: (561) 241-9988
 Fax: (561) 241-5182

DELRAY ESTATE HOMES

A PORTION OF SECTION 27, TOWNSHIP 46 SOUTH, RANGE 42 EAST OF PALM BEACH COUNTY, FLORIDA.



NOTES:
COORDINATES, BEARING, DISTANCES
 STATE PLANE COORDINATES ARE GRID
 DATUM = NAD 83 1990 ADJUSTMENT
 ZONE = FLORIDA EAST
 LINEAR UNIT = U.S. SURVEY FOOT
 COORDINATE SYSTEM 1983 STATE PLANE
 TRANSVERSE MERCATOR PROJECTION
 ALL DISTANCES ARE GROUND, UNLESS OTHERWISE NOTED
 SCALE FACTOR = 1.0000303
 GROUND DISTANCE x SCALE FACTOR = GRID DISTANCE
 BEARING AS SHOWN HEREON ARE GRID DATUM.
 NAD 83 1990 ADJUSTMENT, FLORIDA EAST ZONE.

ABBREVIATION

(C)	=	CALCULATED
D	=	DELTA (CENTRAL ANGLE)
I.R.	=	IRON ROD
I.R.C	=	IRON ROD WITH CAP
L	=	ARC LENGTH
L.A.E.	=	LIMITED ACCESS EASEMENT
L.B.	=	LICENSED BUSINESS
L.S.	=	LICENSED SURVEYOR
N.R.	=	NON-RADIAL
N.T.	=	NON-TANGENT
O.R.B.	=	OFFICIAL RECORD BOOK
O.S.O.	=	O'BRIEN, SUITER, O'BRIEN
P.B.	=	PLAT BOOK
P.C.P.	=	PERMANENT CONTROL POINT
P.G.	=	PAGE
P.B.C.R.	=	PALM BEACH COUNTY RECORDS
P.R.M.	=	PERMANENT REFERENCED MONUMENT
P.U.D.	=	PLAN UNIT DEVELOPMENT
R	=	RADIUS
R/W	=	RIGHT OF WAY
S.F.	=	SQUARE FEET
U.E.	=	UTILITY EASEMENT

LEGEND

⊙	=	SET P.R.M. (4"x4" CONC. MONUMENT W/ ALUMINUM DISC STAMP: "L.B.#7264) -UNLESS OTHERWISE NOTED
○	=	SET P.C.P. (NAIL AND DISC. L.B.#7264)
△	=	FOUND P.B.C. BRASS DISC
⊕	=	CENTERLINE

FOUND PALM BEACH COUNTY BRASS DISC IN CONC. MONUMENT STAMPED "SLANT"
 N=760850.540
 E=935436.792
 POSITION NOT TO SCALE